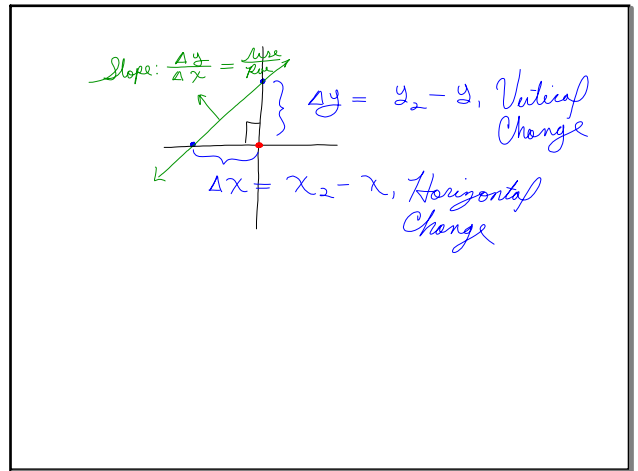
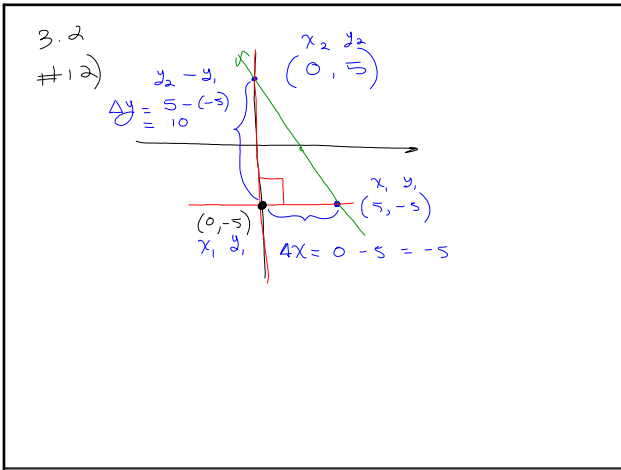


February 4, 2015  
 \* SSC #2 Due Friday  
 \* only the Cumulative page!  
 \* Quiz #4 - Friday  
 • on Slope

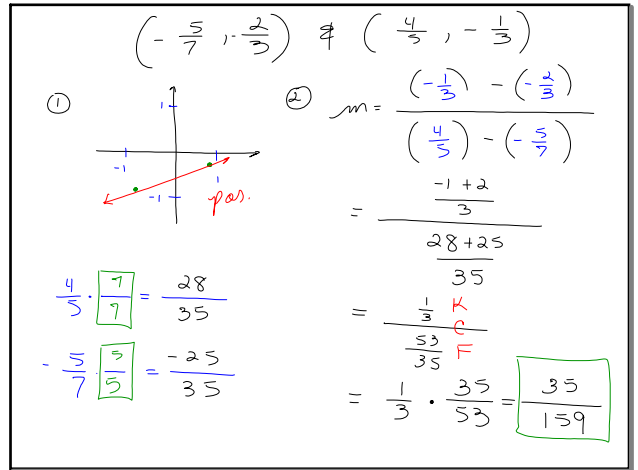
Feb 4-10:49 AM



Feb 4-11:03 AM



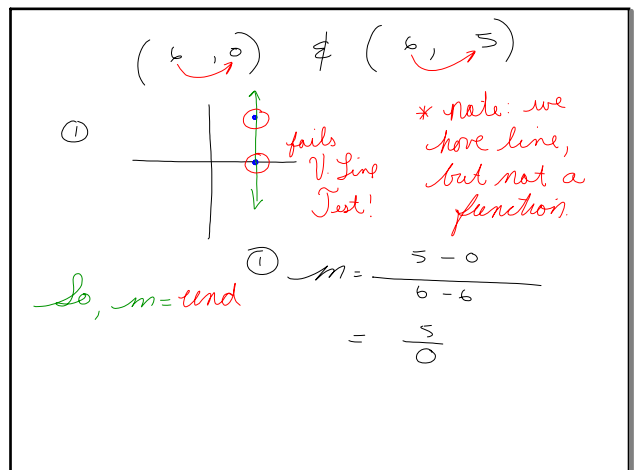
Feb 4-11:09 AM



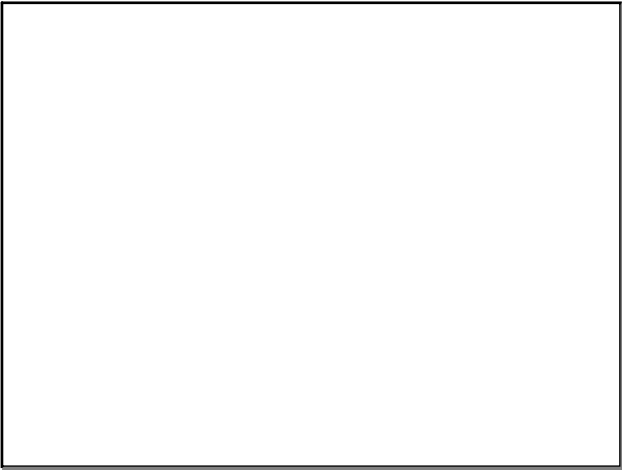
Feb 4-11:23 AM

FPZ  
 $\frac{a}{b} \cdot \frac{c}{c} = \frac{a}{b} \cdot 1 = \frac{a}{b}$   
 "one"  
 ① Use FPZ to simplify fractions  
 $\frac{18}{24} = \frac{2 \cdot 3 \cdot 3}{2 \cdot 2 \cdot 2 \cdot 3} = 1 \cdot \frac{3}{2 \cdot 2} \cdot 1 = \frac{3}{4}$   
 ② Use FPZ to find equivalent fractions  
 $\frac{3}{4} \cdot \frac{5}{5} = \frac{15}{20}$   
 "one"

Feb 4-11:26 AM



Feb 4-11:42 AM



Feb 4-11:47 AM